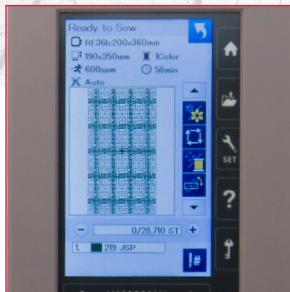


Memory Craft 550E LE



JANOME
Reliability by Design

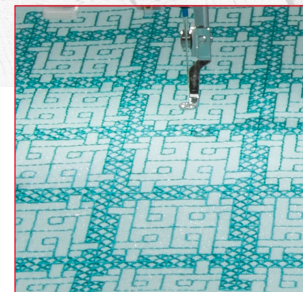
Memory Craft 550E LE



180 Built-in designs and
6 fonts for monograms



Maximum Embroidery
Size: 7.9" x 14.2"



Built-in Sashiko and
Wedding designs

Embroidery

- Top loading full rotary hook bobbin
- 180 built-in designs
- 6 fonts for monogramming
- 2 and 3 letter monogramming
- Maximum embroidery size: 7.9" x 14"
- Design transfer via USB
- Embroidery sewing speed: 400-860 SPM
- Embroidery format: .JEF, .JEF+ and JPX
- Programmable jump thread trimming
- Adjustable speed while embroidering
- On-screen editing functions include enlarge/reduce, rotate, flip, drag and drop, arc, combine, copy and paste, grouping, corner layout, single color sewing, zoom
- Flexible stitch traveling (by units of 1, 10, 100 and 500)
- Direct jump to desired stitch point
- Auto return post thread break
- Adjustable hoop positioning
- Built-in advanced needle threader
- Automatic thread cutter
- Easy set bobbin
- Bobbin winding plate with cutter
- Bobbin thread sensor
- Full color LCD touchscreen
- Thread brands include: Janome, Robison-Anton, Madeira, Mettler
- Extra wide table included
- Dust cover included
- AcuStitch Software Included
- USB Flash Drive with 30 Exclusive Designs for the RED28b hoop

Standard Hoops:

- RE36b: 7.9" x 14.2"
- SQ20b: 7.9" x 7.9"
- RE20b: 5.5" x 7.9"
- SQ14b: 5.5" x 5.5"

Optional Hoops:

- RE28b: 7.9" x 11"
- RE10b: 1.5" x 5.5"
- HH10b: 1.5" x 3.5"
- ASQ18b: 7.2" x 7.2"